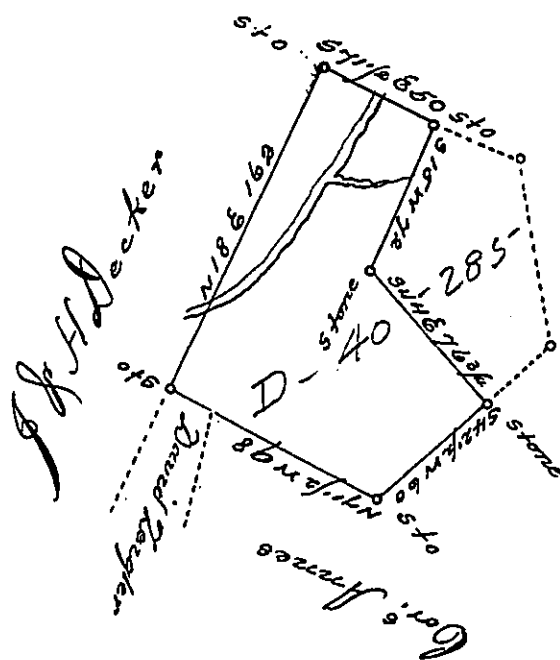


See D-40-285

(Delaware Tp.)
PIKE
S.E. Corner.



Surveyed October the 24th A.D. 1864. to William F. Angle the above tract of Land Situate in Delaware Township Pike County. Containing seventy six acres and twenty eight perches and the allowance of six per cent for Roads &c Being part of a tract of Land Surveyed the 20th day of April A.D. 1790 to Henry Decker by virtue of an Application No: 1408. and dated April 18th A.D. 1766.

pr. John Layton, Assist. C. J.

To James P. Barr
S. J.

Examined and approved the above this the 25 day of October A. D. 1864

Wm C M Curtis C. J.

IN TESTIMONY that the above is a copy of the original remaining on file in the Department of Internal Affairs of Pennsylvania, made conformably to an Act of Assembly approved the 16th day of February, 1833, I have hereunto set my Hand and caused the Seal of said Department to be affixed at Harrisburg, this seventh day of March, 1899.

James W. Latta
Secretary of Internal Affairs.